

HK01-I Template and installation instructions

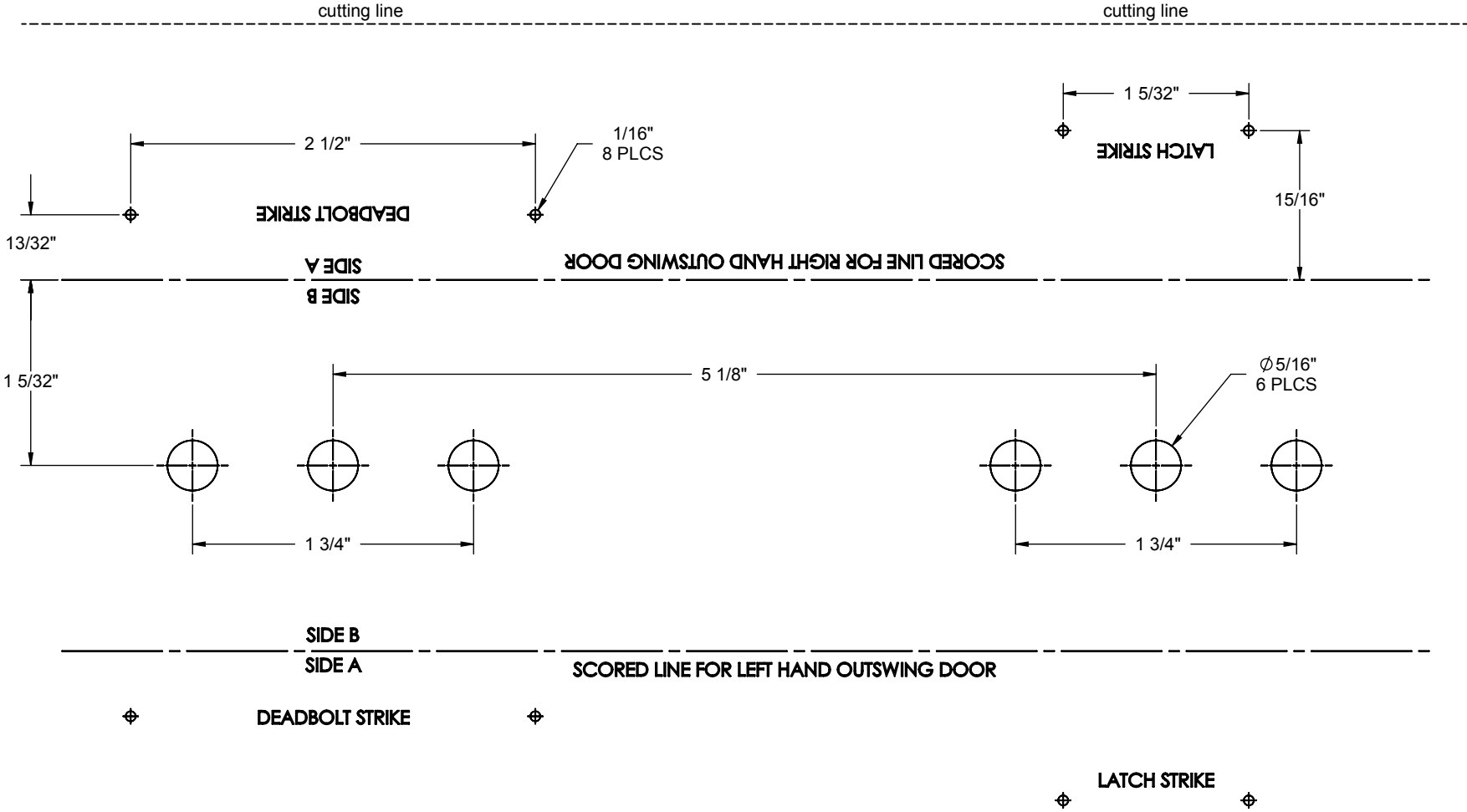
RFQHKE

Warning: Verify door profile prior to installation

You will require a profile wide enough for proper installation. With the door closed, the minimum inside door profile width is 1-7/8" from the edge of the door frame (glass side) to the edge of the door jamb or metal door frame (z-bar), which ever is narrower. The minimum outside door profile width is 2" from the edge of the door frame (glass side) to the edge of the door jamb or metal door frame Z-bar), which ever is narrower.

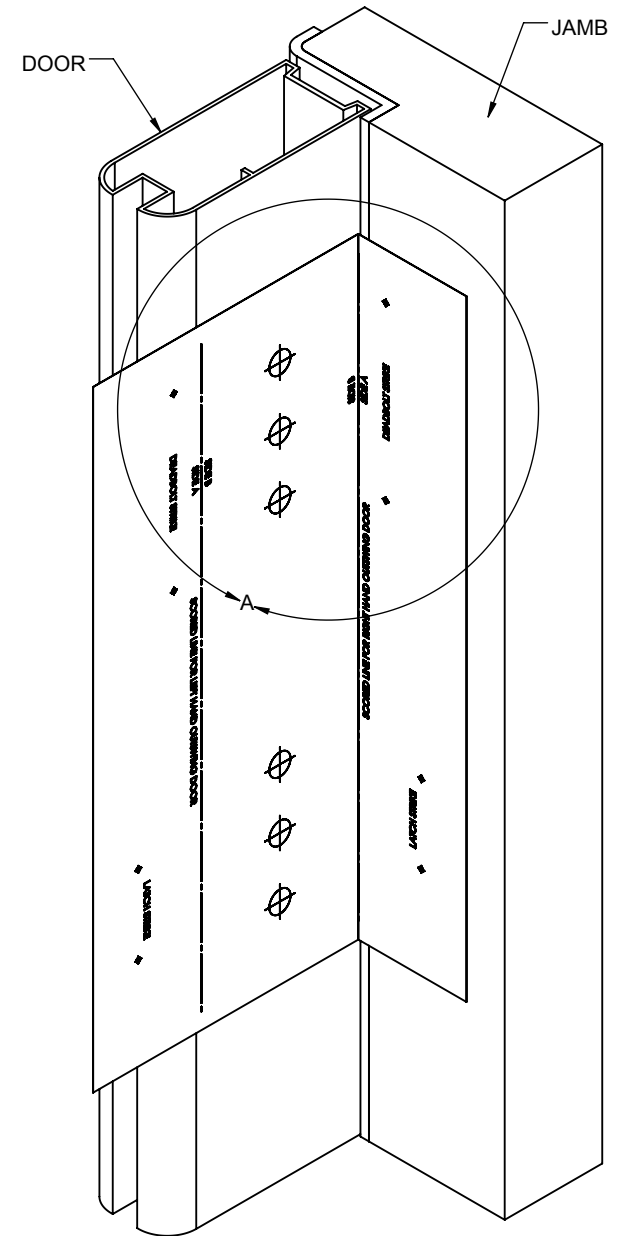
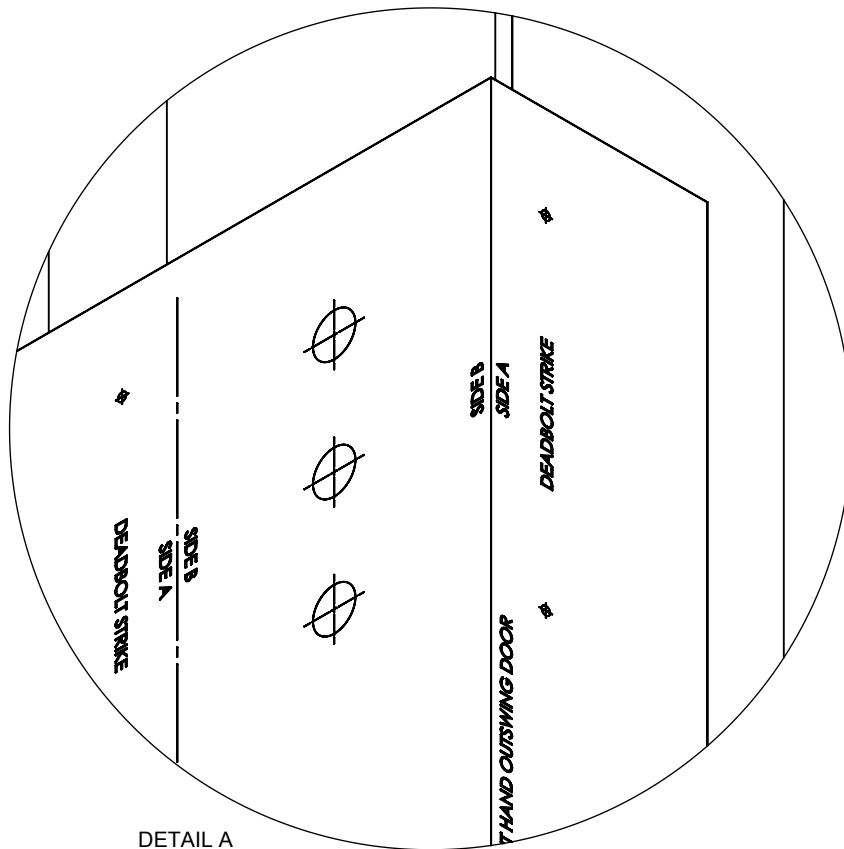
Drilling template prerequisite: Determine if your storm door is right or left handed

From outside of the door, looking in, if the hinges are on your left, your door is left handed. Your door will open to the left side. If the hinges are on your right, your door is right handed. Your door will open to the right side. Ensure that the inside latch paddle does not interfere with the prime door lock.



Template Placement and Drilling Instructions

1. Fold the template on the dotted line to 90° according to the handedness (left or right).
2. With the door in closed position, place folded template on the inside of the door so that the SIDE A is against the jamb or metal z-bar, which ever projects out furthest; and SIDE B is on the inside surface of the door.
3. Use a center punch to mark the position of 6 holes on the inside surface of the door on SIDE B. Mark the position of 4 holes on the jamb on SIDE A (for strikes).
4. Using a 5/16" drill bit, drill 6 holes straight through door on SIDE B.
5. Using a 1/16" drill bit, drill 4 pilot holes to a depth of 1" on the jamb on SIDE A.



SPINDLES AND SCREWS SELECTION

HANDLE SPINDLE SELECTION

DOOR THICKNESS

1"



ALIGN CAP OF SPINDLE HERE

1 1/4"



1 1/2"



1 3/4"



2"



2 1/8"



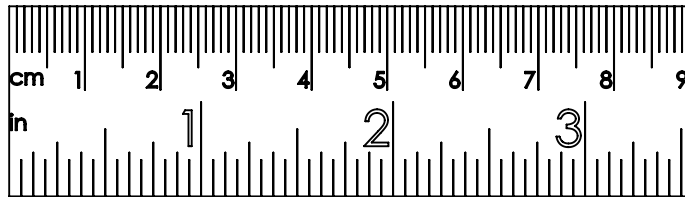
ALIGN CAP OF SPINDLE HERE

1. Print out this sheet using 1:1 scale.
2. Over lay handle spindle on top of the image.
3. Select the spindle that matches your door thickness.

The handle spindle has now been selected and is ready for installation.

KEY LOCK SPINDLE PREPARATION

RULER FOR DOOR THICKNESS



PLACE SPINDLE HERE

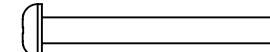
1. Print this sheet using 1:1 scale.
2. Over lay flat spindle against the image.
3. Mark door thickness on the spindle.
4. Cut off the portion of the spindle beyond the mark line.

The key lock flat spindle is now ready for installation.

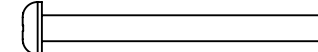
LATCH SCREW SELECTION

DOOR THICKNESS

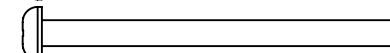
1"~1 1/4"



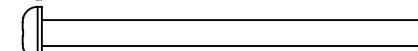
1 1/2"



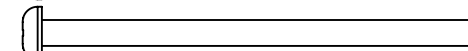
1 3/4"



2"



2 1/8"



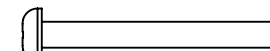
1. Print out this sheet using 1:1 scale.
2. Over lay screws on top of the image.
3. Select the screws that match your door thickness.

The latch screws have now been selected and are ready for installation.

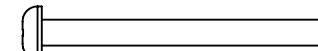
DEADBOLT SCREW SELECTION

DOOR THICKNESS

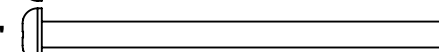
1"



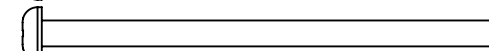
1 1/4"



1 1/2"~1 3/4"



2"~2 1/8"



1. Print out this sheet using 1:1 scale.
2. Over lay screws on top of the image.
3. Select the screws that match your door thickness.

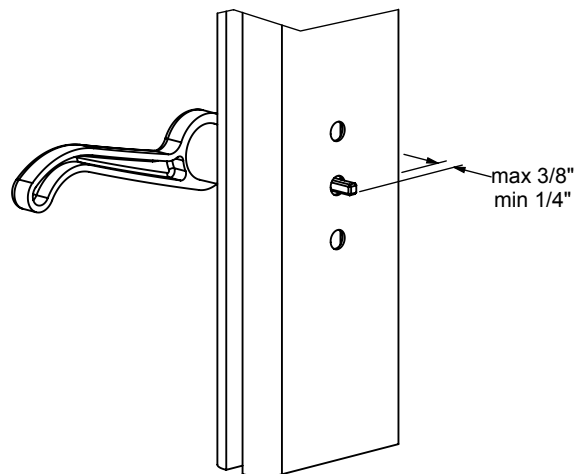
The deadbolt screws have now been selected and are ready for installation.

Handle & Latch Installation

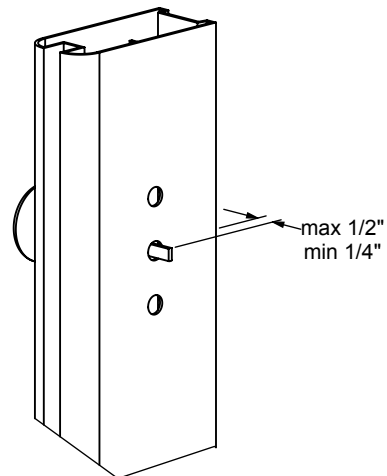
1. Rotate the outside handle to the left or right according to your door handedness.
2. Insert the pre-selected handle spindle (see page 3) into the center hole of the outside handle from the back side of the handle housing; ensure the spindle is fully seated into the hole. The spindle locks the handle in place.
3. Place the outside handle assembly on the door. (If your door thickness is not standard then: The spindle should project through inside of the door a max of 3/8" and a min of 1/4". You may have to shorten the spindle.)
4. Place the latch on the inside of the door, fasten with two machine screws pre-selected (see page 3). Do not over tighten screws.
5. Place the latch strike and the thick spacer against the jamb (the spacer shall be placed in between the strike and the jamb), align with pilot holes on jamb and fasten with two tapping screws.

Key Lock & Deadbolt Installation

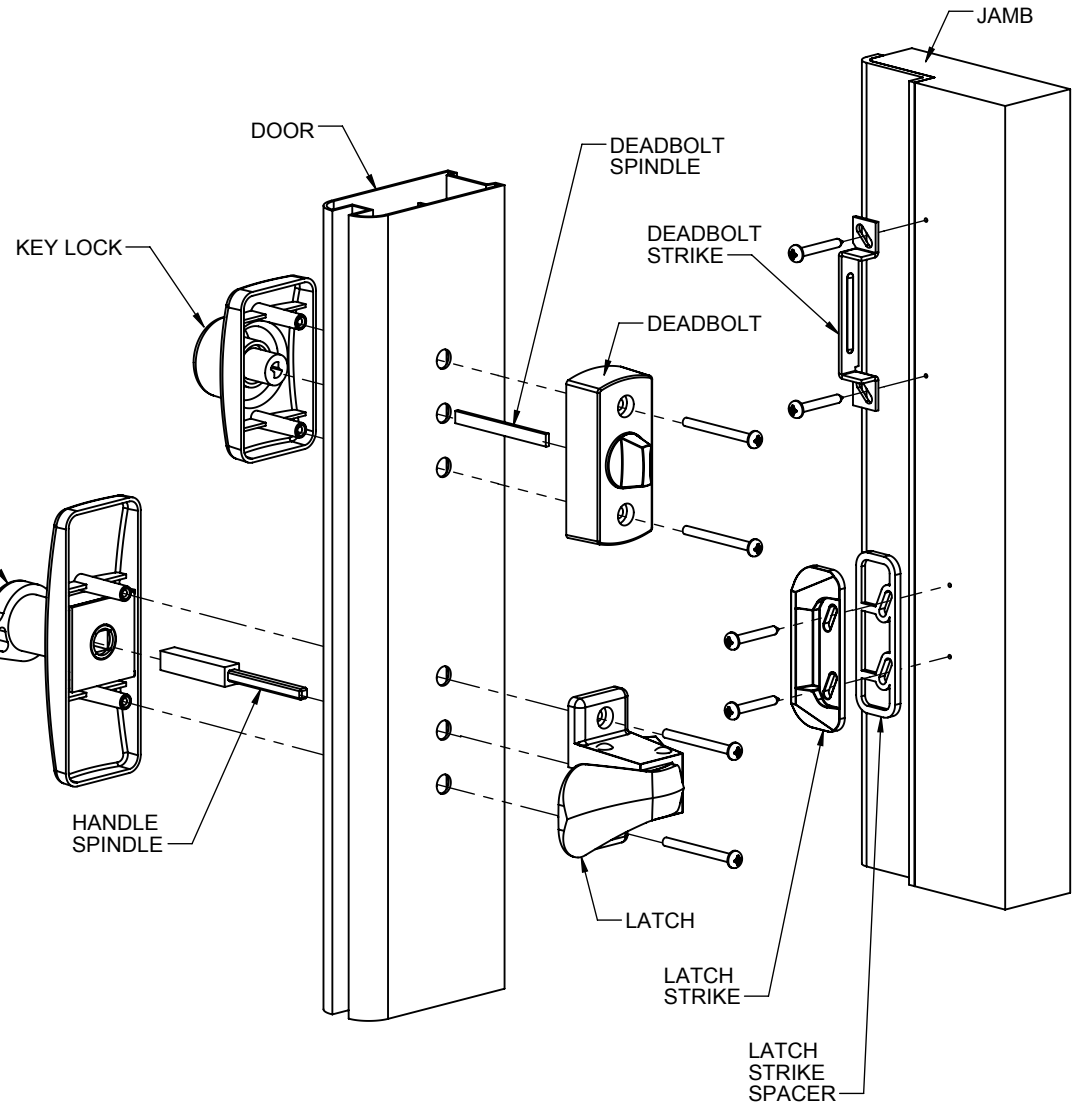
1. Place the key lock on the outside of the door and hold it in place temporarily by hand.
2. Insert the pre-prepared flat spindle (see page 3) from the inside through the center hole into the keylock; ensure the spindle is fully inserted. (If your door thickness is not standard then: The spindle should project through inside of door a max of 1/2" and min of 1/4". Cut off the excess portion of the spindle.)
3. Place the deadbolt on inside of the door, align the center hole carefully with the spindle, fasten with two machine screws pre-selected (see page 3). Do not over tighten screws.
4. Place the strike for the deadbolt on jamb, align with pilot holes on jamb, fasten with two tapping screws.



Handle Spindle Projected Length

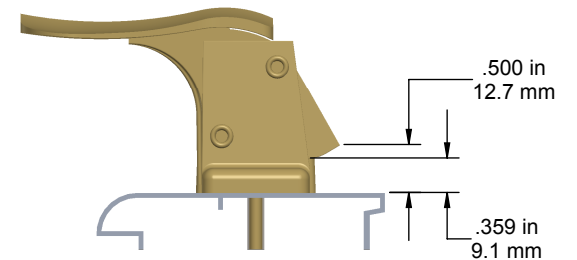
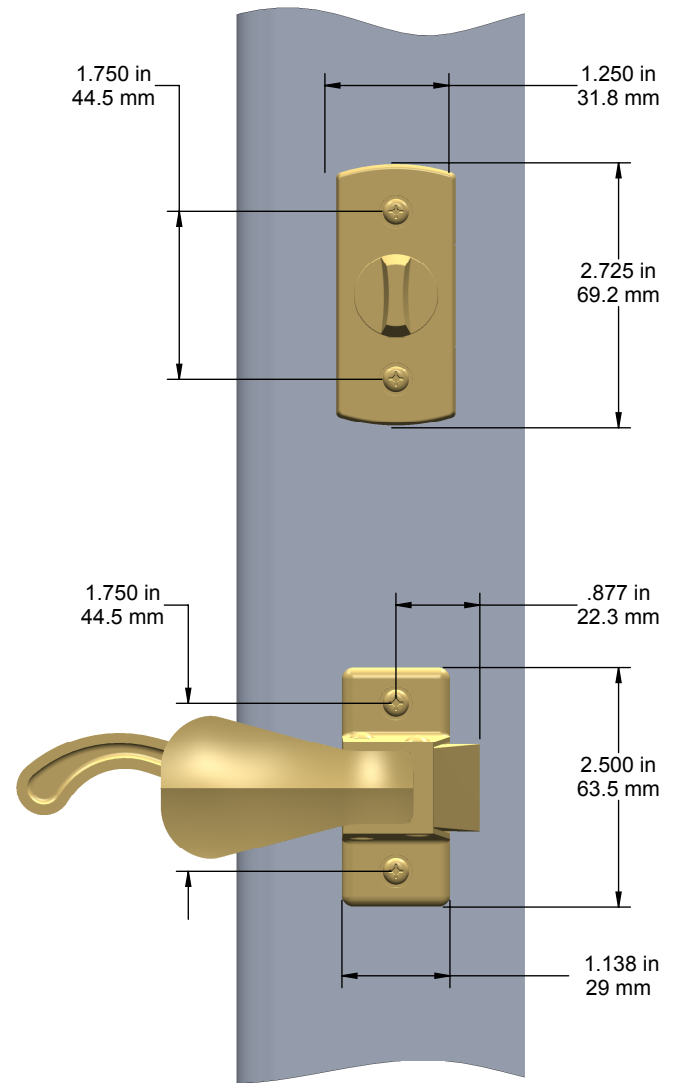
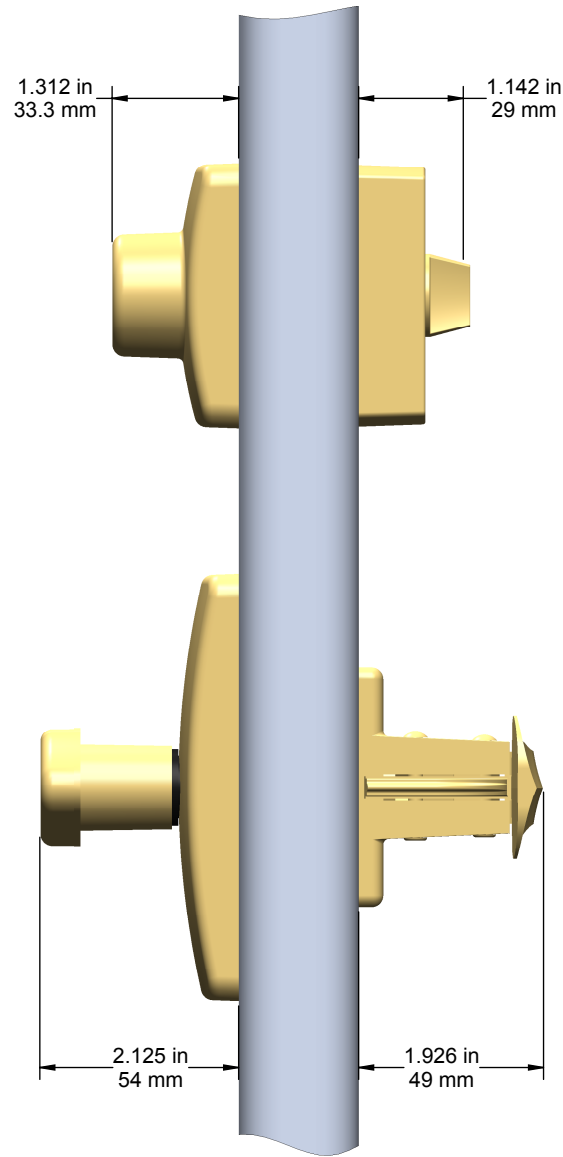
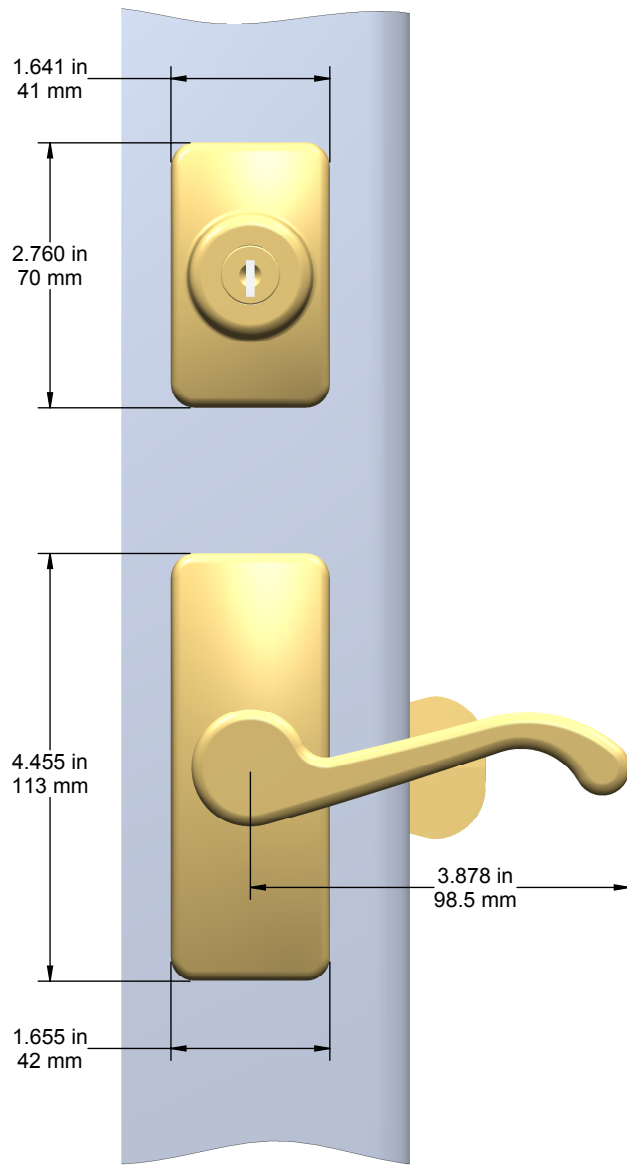


Deadbolt Spindle Projected Length



Thank you for your purchase.
 If you require any information or installation assistance,
 please contact our customer service.
 Monday to Friday 7:30 am -3 pm (Eastern Time)
 Tel: 1-800-361-2236 x 230
 e-mail: info@idealinco.com
 Updated instructions (if applicable) can be found at www.idealinc.com

IDEAL SECURITY INC.
 LASALLE, QUEBEC, CANADA
 CORAOPOLIS, PA., USA



HK01-I DIMENSIONS